

Settings Windows Interface

- [Introduction](#)
- [Colors and Font Settings](#)
- [Changing Column Widths](#)
- [Working with Sierra Chart Windows](#)
 - [Common Features \(Working with Sierra Chart Windows\)](#)
 - [Selection Specific Options \(Working with Sierra Chart Windows\)](#)
 - [Pages \(Working with Sierra Chart Windows >> Selection Specific Options\)](#)
 - [Item List \(Working with Sierra Chart Windows >> Selection Specific Options\)](#)
 - [Value Field \(Working with Sierra Chart Windows >> Selection Specific Options\)](#)
 - [Toggle Field \(Working with Sierra Chart Windows >> Selection Specific Options\)](#)
 - [Button \(Working with Sierra Chart Windows >> Selection Specific Options\)](#)
- [Changing User Interface Behavior](#)
- [Keyboard Shortcuts](#)
- [Searching for Specific Settings](#)
- [Settings Window Video](#)

Introduction

This page documents the user interface for the Settings type windows within Sierra Chart.

Watch the [Settings Window Video](#).

For information about the new Chart Settings window, refer to [New Chart Settings Window](#).

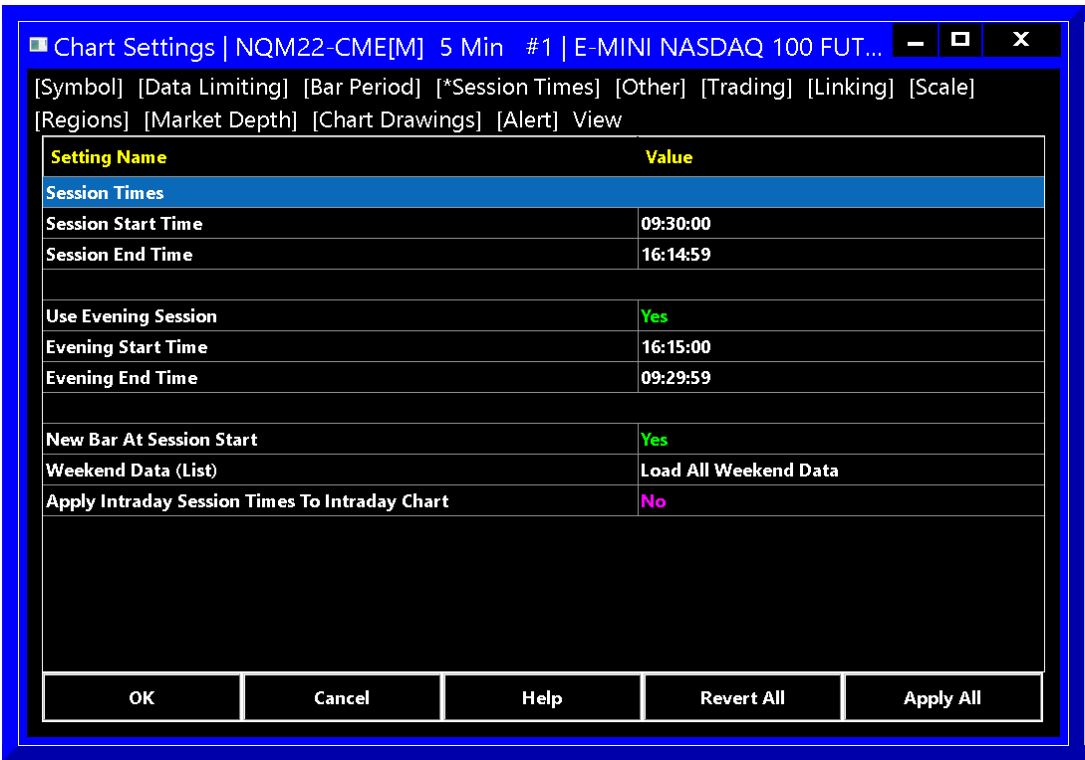
These new Settings type of windows are gradually replacing the old Microsoft Windows-based dialog windows which have proven to be unreliable, very inefficient, and operating system resource heavy. From a development and programming perspective these old dialog windows are very difficult to implement.

The new Settings Windows, are modeless, which means you can interact with other areas of Sierra Chart while one of these Settings Windows remains open. This is a major advantage.

These windows are resizable. So you can resize them as you require. The column widths in these windows are adjustable. The font and font colors can be customized. The colors of various elements of these windows can be customized. Adding, and reorganizing settings in these windows is much easier. These windows support easy translation to other languages. These windows are very fast and efficient

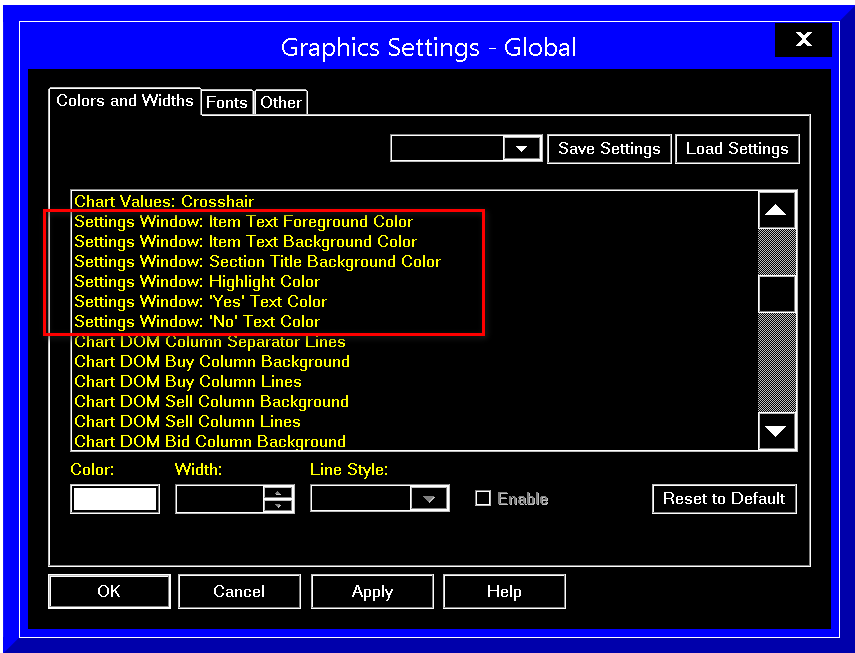
and work reliably unlike the old Microsoft dialog windows which had numerous problems at the operating system level.

This is an example of one of the new settings windows:

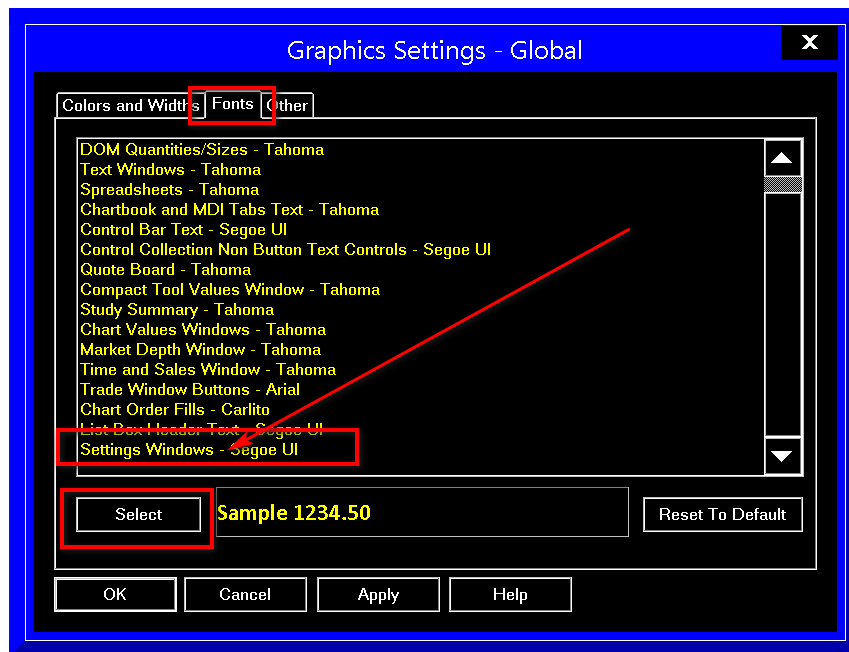


Colors and Font Settings

The colors of the items within Settings type of windows are fully configurable through **Global Settings >> Graphics Settings >> Colors and Widths**. The color settings begin with "Settings Window:". Refer to the image below.



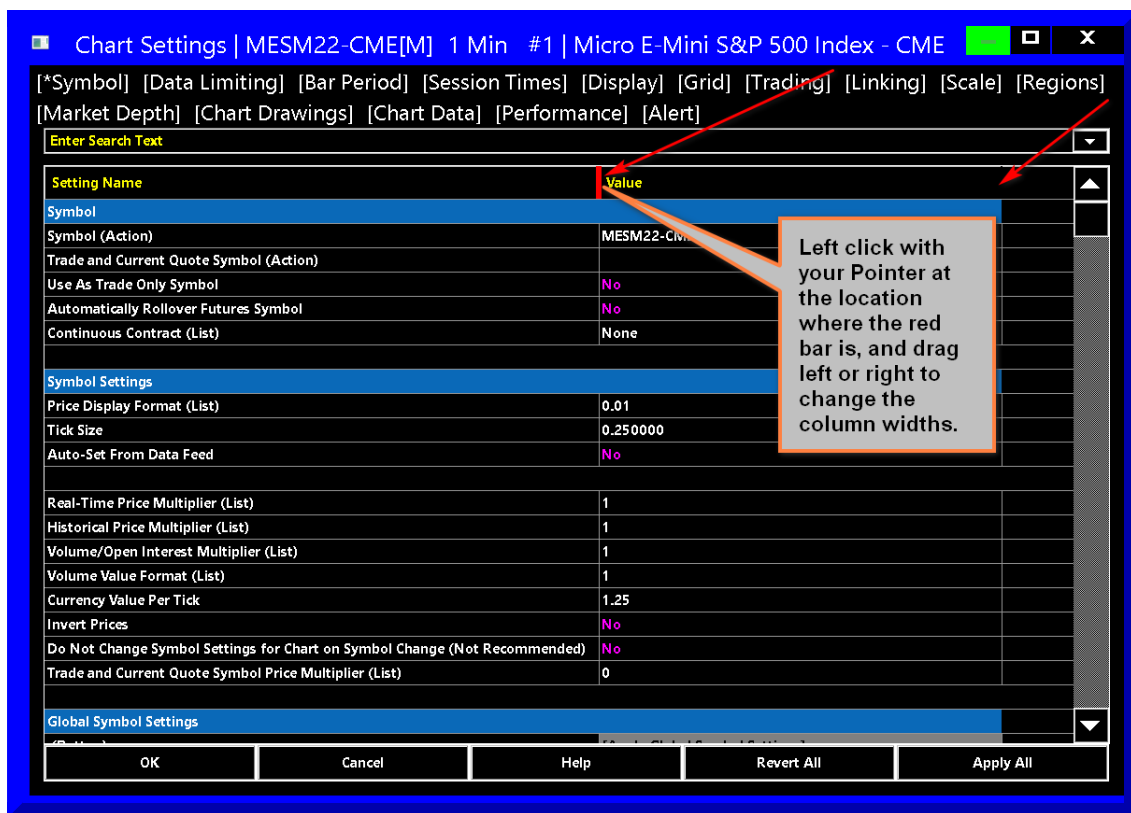
To change the Font and Font Size, select **Global Settings >> Graphics Settings >> Fonts**. Change the **Settings Windows** font. Refer to the image below.



Changing Column Widths

To change the widths of the columns in Settings Windows, Left click with your Pointer on the header line at the location of the dividing area between each column as shown in the image below.

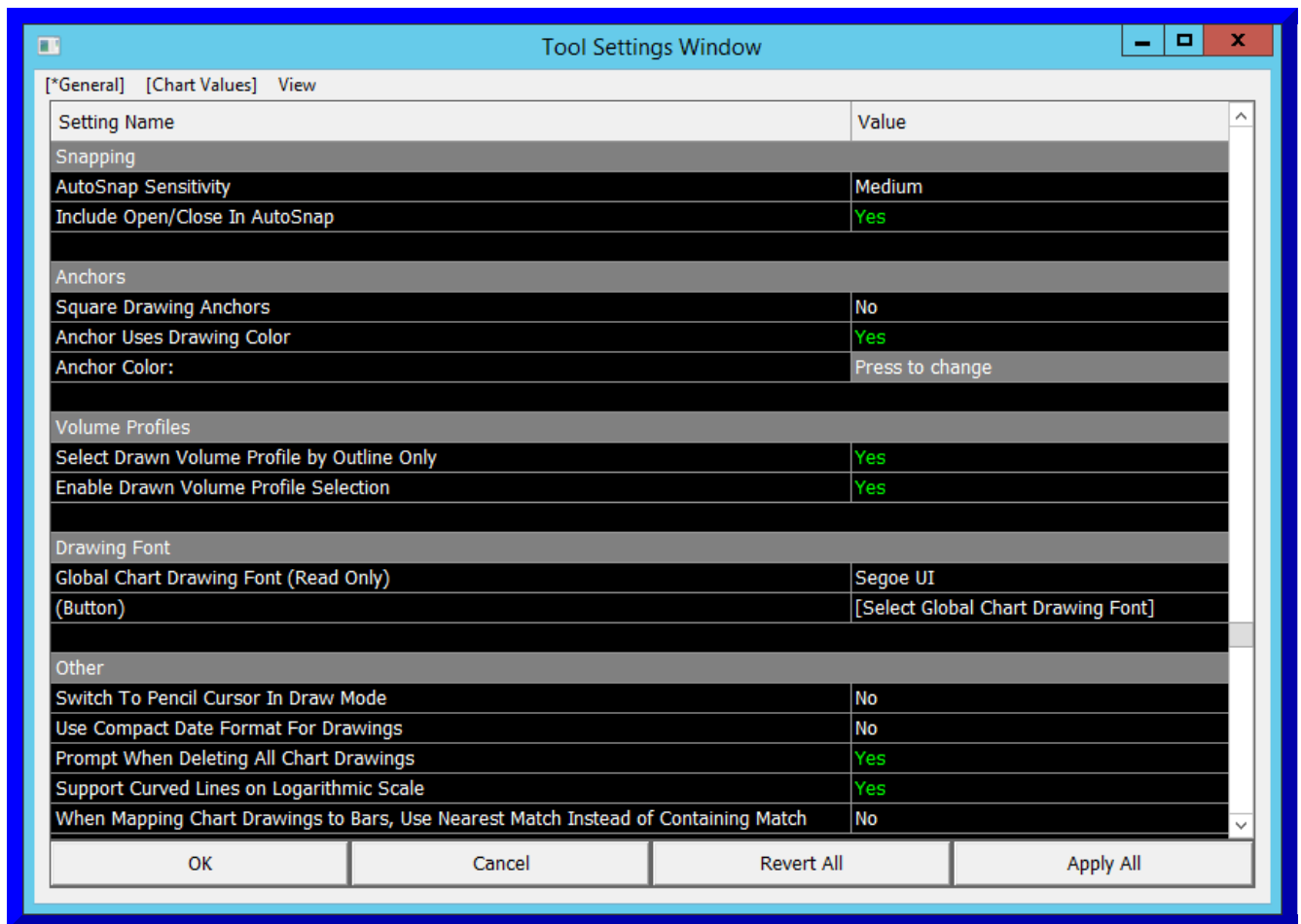
While holding the left button down with your Pointer, drag left or right to change the width. When you have completed the width adjustment, release the Left button on your Pointer.



Working with Sierra Chart Windows

Sierra Chart has implemented a new methodology for Dialog Windows in order to improve the user experience, and allow the software to be more independent from specific vendors and/or Operating Systems.

These new Windows are **Modeless**, which means that they can be displayed at any time and with any other window(s), and they will not interfere with the user interaction of any other window currently open in Sierra Chart, including the main Sierra Chart window.



Common Features (Working with Sierra Chart Windows)

- **View >> Show Original Values:** When this option is selected, a new column is displayed to the right of the **Value** column and will display the original value of the setting when it gets changed from its original value. This allows you to see the original value when making changes.
- **OK:** Selecting this button will accept the changes that have been made on the window and close the window.
- **Cancel:** Selecting this button will revert any changes that have been made on the window back to the last saved state and will close the window.
- **Revert All:** Selecting this button will revert any changes that have been made on the window back to the last saved state. This is the same action as Cancel, except that the window does not close when this button is selected.
- **Apply All:** Selecting this button will accept any changes that have been made on the window. This is the same action as OK, except that the window does not close when this button is selected.
- **A and C Buttons:** Items that require an entry (values, item selections, etc.) two buttons are displayed on the right of the entry named **A** and **C**. The following describes their functions:
 - **A:** This button is optional. The A button accepts the entered value. This is the same as using the Enter key on the keyboard. Note that this is not the same as Apply. It only accepts the entered value and




sets the field into a non-edit mode. Selecting Cancel to exit the page would revert the change back to the original value.

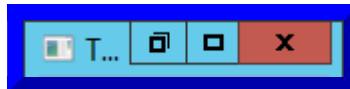
To accept the value you can press OK or simply change focus to another setting. You do not have to use this button.

- **C:** This button is optional. The C button cancels the change that has been made in the field and returns the value to the last selected/entered value. If the last value was previously entered with the **A** button (or Enter), then the **C** button will return to that entry. Note that this is not the same as Cancel for the entire window.

The **Cancel** button will remove all changes made to this window and revert to the last Saved/Applied settings.

To revert a value to the previous setting, you can just simply change it to its previous setting, press the Cancel button at the bottom or press the C button.

- **Minimize/Maximize/Close:** The three buttons in the upper right corner of the window (  ) from left to right are for the following actions:
 - **Minimize:** When this button is pressed, the window will minimize to a small amount of the title bar and these control buttons.



When a Sierra Chart window is minimized it will not be shown in the task bar, as it is still managed by the main Sierra Chart window. Therefore, this minimized window will be present on the system desktop. It can be moved and placed anywhere on the desktop that is most convenient.

The minimized window will always be associated with the Sierra Chart window which opened it, therefore when that window is minimized and then restored, the New Sierra Chart window will also be restored to its open state.

- **Maximize:** When this button is pressed, the window will maximize to cover the entire screen.
- **Close:** When this button is pressed, the window will be closed and any modifications which had not been previously saved by selecting **Apply All** will revert to their previous setting.

Selection Specific Options (Working with Sierra Chart Windows)

Pages (Working with Sierra Chart Windows >> Selection Specific Options)

Each window could have multiple pages that it can display. Each page is listed at the top of

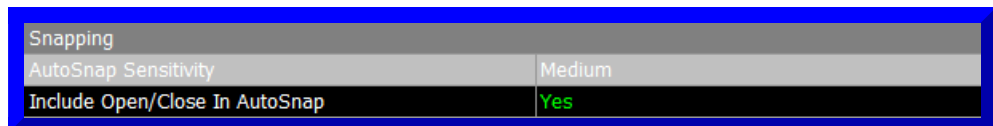
the window within square brackets []. In the image above the pages available are: **[General]** and **[Chart Values]**. Left clicking on the page name will change to that particular page.

The active page is marked with an asterisk (*) to the left of the page name. For the image above, the active page is **[*General]**.

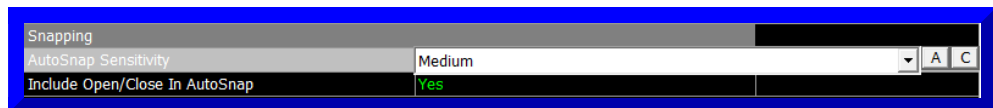
Item List (Working with Sierra Chart Windows >> Selection Specific Options)

An **Item List** (also known as a drop-down list) allows you to bring up a list of pre-defined items that you can then make a selection from. To use one of these item lists, follow these instructions:

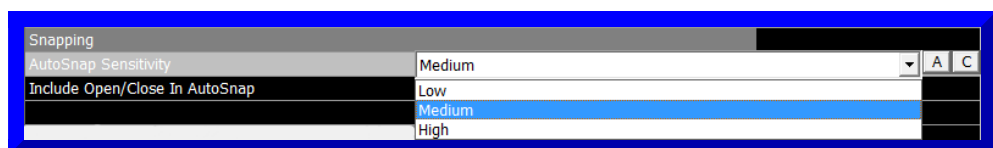
- Left-Click on the specific line in the window for which you want to make the change. This will highlight the line.



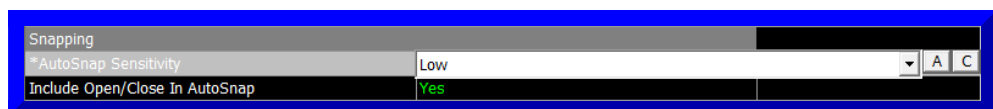
- Left-Click on the item to be changed. It is necessary to click on the actual item to be changed on the right, not the name of the item (which is on the left side). It is possible that there is nothing displayed for this item, still click in the same area where the item would be displayed on the right to bring up the list. This opens the list menu.



- Left-Click on the displayed item or on the arrow on the right. This will open the list of items that are available for selection.



- Move the pointer up or down to select a specific item. Once on the item, either left-click or release the left-click button, depending on how the selection above was made. This will select the specific item and close the list.



- Select the **A** button to the right of the selection or use the **Enter** key on the keyboard. Either of these will accept the selected entry and close the item list. If the wrong item is selected, then pressing the **C** button will cancel the last selection and change to the last selected entry.

Value Field (Working with Sierra Chart Windows >>

Selection Specific Options)

A Value Field allows you to enter a value or text. To enter or change a Value Field, follow these instructions:

- Left-Click on the specific line in the window for which you want to make the change. This will highlight the line.

Tool Options	
After Single Tool Use Change To	None
Support Left Click To Select Chart Drawings	Yes
Support Drag for Drawing Creation/Modification	No
Drawing Selection Margin in Pixels	10
Double Click On Drawing Brings Up Drawing Properties	No
Keep Chart Drawing Selected After Modification	No

- Left-Click on the item to be changed. It is necessary to click on the actual item to be changed on the right, not the name of the item (which is on the left side). This will allow the field to be edited.

Tool Options	
After Single Tool Use Change To	None
Support Left Click To Select Chart Drawings	Yes
Support Drag for Drawing Creation/Modification	No
Drawing Selection Margin in Pixels	10 A C
Double Click On Drawing Brings Up Drawing Properties	No
Keep Chart Drawing Selected After Modification	No

- By default, the existing value will be highlighted allowing entry of the new value without having to swipe or delete any pre-existing information. Enter the new value as needed.

Tool Options	
After Single Tool Use Change To	None
Support Left Click To Select Chart Drawings	Yes
Support Drag for Drawing Creation/Modification	No
*Drawing Selection Margin in Pixels	25 A C
Double Click On Drawing Brings Up Drawing Properties	No
Keep Chart Drawing Selected After Modification	No

- Select the **A** button to the right of the selection or use the **Enter** key on the keyboard. Either of these will accept the selected entry and close the Value Field. If an incorrect entry is made, then pressing the **C** button will cancel the entry and change to the last entered value.

Tool Options	
After Single Tool Use Change To	None
Support Left Click To Select Chart Drawings	Yes
Support Drag for Drawing Creation/Modification	No
*Drawing Selection Margin in Pixels	25
Double Click On Drawing Brings Up Drawing Properties	No
Keep Chart Drawing Selected After Modification	No

Toggle Field (Working with Sierra Chart Windows >>

Selection Specific Options)

A Toggle Field switches between two different states, typically Yes and No. Clicking on the current value will switch to the other value.

To change the value in a Toggle Field follow these instructions:

- Left-Click on the specific line in the window for which you want to make the change. This will highlight the line:

Snapping	
AutoSnap Sensitivity	Medium
Include Open/Close In AutoSnap	Yes

- Left-Click on the item to be changed. It is necessary to click on the actual item to be changed on the right, not the name of the item (which is on the left side). This will change the status of the item to its other value.

Snapping	
AutoSnap Sensitivity	Medium
*Include Open/Close In AutoSnap	No

Button (Working with Sierra Chart Windows >> Selection Specific Options)

Selecting a Button will bring up a new window or perform an action such as Loading or Saving a selection. To use a Button follow these instructions:

- Left-Click on the specific line in the window for which you will be selecting the button. This will highlight the line.

Saved DTS Configuration	
*DTS Config	New Configuration
(Button)	[Load]
(Button)	[Save]
(Button)	[Delete]

- Left-Click on the button (The button is within square brackets []). It is necessary to click on the button itself which is on the right, not the name of the button, or the reference to the button (which is on the left side).

Selecting the button will perform the action defined by the button. In this example, a new Data/Trade Service Configuration has been created and selecting the **Save** button will save this configuration.

Saved DTS Configuration	
DTS Config	New Configuration
(Button)	[Load]
(Button)	[Save]
(Button)	[Delete]

In the example above, selecting the **Save** button removed the asterisk (*)

that was next to **DTS Config**, since that change has now been saved.

Changing User Interface Behavior

Use the following options to change the user interface behavior of the Settings Windows to meet your required expectations and comfort.

The following settings are in **Global Settings >> General Settings >> Settings Windows**.

The screenshot shows a window titled "General Settings" with a tabbed interface. The active tab is "[*SettingsWindows]". The window contains a table with two columns: "Setting Name" and "Value". The settings listed are:

Setting Name	Value
Resize Settings Window on Column Count Change	Yes
Use Single Click for Yes/No in Settings Window when not Selected	No
Use Single Click for Edit Control in Settings Window when not Selected	Yes
Use Single Click for List Box in Settings Window when not Selected	Yes
Use Single Click for Editable List Box in Settings Window when not Selected	Yes
Use Single Click for Button in Settings Window when not Selected	Yes
Use Single Click for Color Control in Settings Window when not Selected	No
Immediately Show Drop Down When List Setting Is Being Edited	Yes
Show View Menu in Settings Window	Yes

At the bottom of the window are four buttons: "OK", "Cancel", "Revert All", and "Apply All".

- **Resize Settings Window on Column Count Change:** When this option is set to **Yes**, and there is a change to the number of columns on a Settings Window it will automatically resize appropriately. Either larger or smaller.
- **Use Single Click for Yes/No in Settings Window when not Selected:** When this option is set to **Yes**, then when selecting the Yes/No area of a non-highlighted setting (any setting other than the currently active one), the setting will change the Yes/No value (Yes will become No and No will become Yes). Otherwise, selecting the Yes/No area of a non-highlighted setting will not change the value.
- **Use Single Click for Edit Control in Settings Window when not Selected:** When this option is set to **Yes**, then when selecting the Value Field area of a non-highlighted setting (any setting other than the currently active one), the value field will be selected to allow immediate editing. Otherwise, selecting the Value Field area of a non-highlighted setting will not select the Value Field.
- **Use Single Click for List Box in Settings Window when not Selected:** When this

option is set to **Yes**, then when selecting the List Box area of a non-highlighted setting (any setting other than the currently active one), the list box will be selected. Otherwise, selecting the List Box area of a non-highlighted setting will not select the list box.

- **Use Single Click for Button in Settings Window when not Selected** : When this option is set to **Yes**, then when selecting the Button area of a non-highlighted setting (any setting other than the currently active one), the button will be activated. Otherwise, selecting the button of a non-highlighted setting will not activate the button.
- **Use Single Click for Color Control in Settings Window when not Selected** : When this option is set to **Yes**, then when selecting the Color Control area of a non-highlighted setting (any setting other than the currently active one), the control will be activated. Otherwise, selecting the color control of a non-highlighted setting will not activate the color control.
- **Immediately Show Drop Down When List Setting Is Being Edited** : When this option is set to **Yes**, and a settings row contains a drop-down list box, when the editing begins for that row, the drop-down list will be automatically opened.
- **Show View Menu in Settings Window** : When this option is set to **Yes**, then the **View** menu will be displayed on the Settings windows. Otherwise, the View menu will not be displayed.

Keyboard Shortcuts

The following Keyboard Shortcuts are supported in Settings Windows:

- **Control-Enter** or **Control-Space**: Starts editing of a setting or changes state for a Yes/No setting.
- **Enter**: Finishes editing of a setting and accepts value. If a setting is not being edited, then all changes will be applied and the Settings Window will be closed.
- **Escape**: Cancels editing and reverts setting. If a setting is not being edited, then the Settings window is closed without saving any changes.
- **Tab**: Selects the next setting in the list.
- **Control-Up Arrow**: Selects the previous setting in the list.
- **Control-Down Arrow**: Selects the next setting in the list.
- **Navigating Among Tabs**: To navigate among the different tabs of the Settings Window through the menu items at the top, press the **Alt** key on your keyboard. You will notice that all of the menu items at the top will have one of the letters underlined. Type this letter on your keyboard to switch to the corresponding tab for that menu item.

Scroll Wheel support:

The Mouse Scroll Wheel will scroll the list up or down.

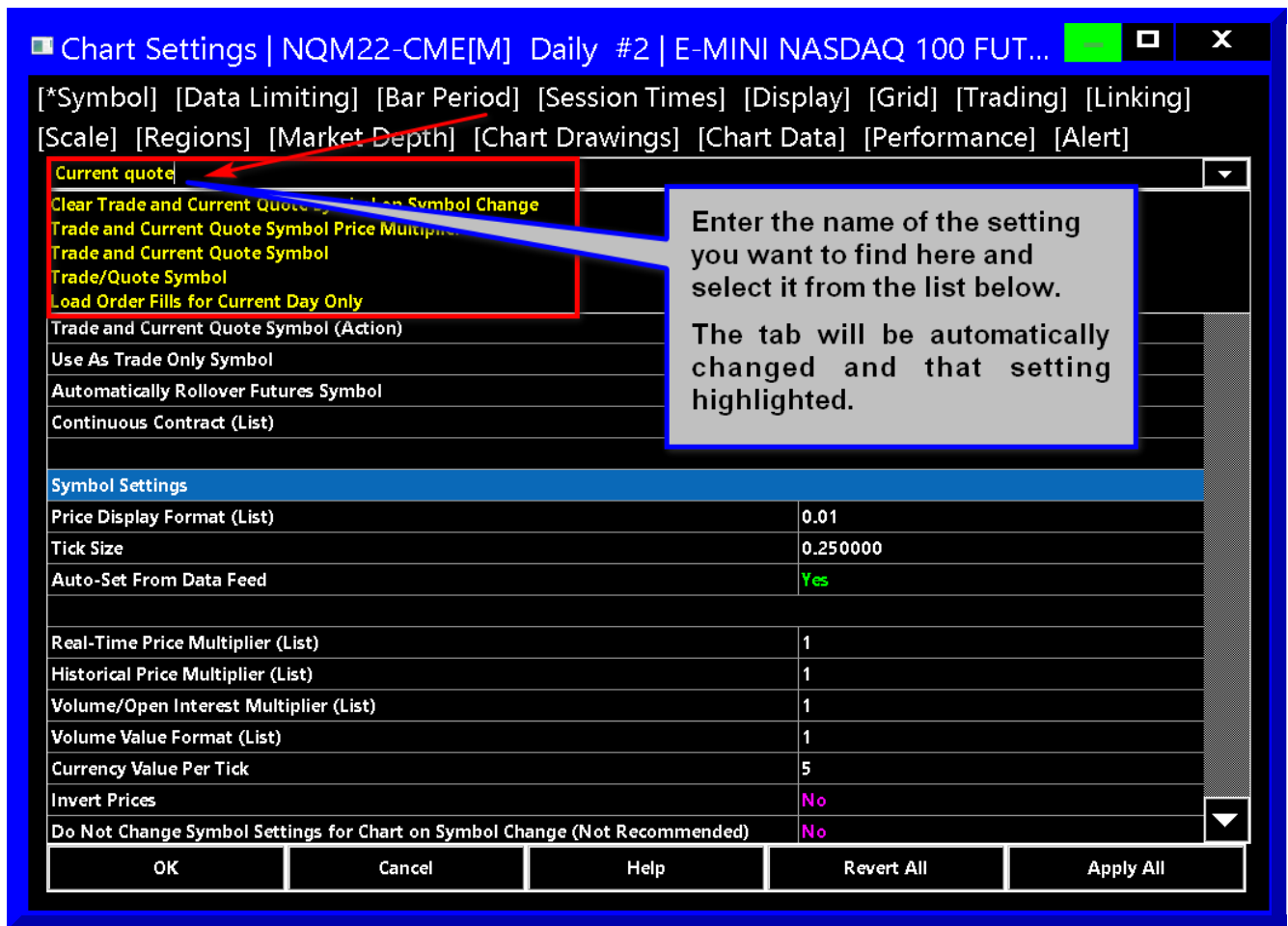
When

Global Settings >> General Settings >> Settings Windows >> Use Mouse Scroll Wheel to Select Settings is enabled, then the mouse scroll wheel will iterate through the settings and select a setting.

Searching for Specific Settings

Searching for Specific Settings

On some of the new Settings Windows it is supported to search for specific settings.



Instructions:

1. In the edit box at the top of the Settings Window which supports search, that says "Enter Search Text", type in the text you want to search for.
2. Settings which match this text, will be listed in the list below.
3. Select the setting that you want from that list.
4. The Settings Tab will be changed to the corresponding tab containing that setting. And that setting will be highlighted.
5. To control the search behavior select **Global Settings >> General Settings >> Settings Windows**. Go to the **Select String Matching Method in Search** setting. There are two choices: **Extract String Matching** and **Fuzzy String Matching**.

*Last modified Wednesday, 22nd February, 2023.